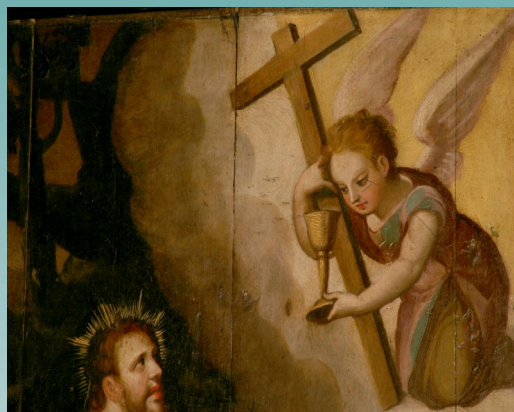


## Municipal Museum – Mártir Santo Nucleus

This museum is located in Mártir Santo São Sebastião Hermitage. This Hermitage was erected in 1576, following the so called Great Plague of 1569, when religious temples were erected on the entrance of many townships, under the invocation of S. Sebastião. The interior of this sixteenth century temple is covered by a wooden ceiling of three fronts on the nave and painted stucco on the presbytery (separated by a triumphal round-arch), where it should be highlighted: the choir, a pulpit of square base, and the altarpiece of the main altar, of painted and golden wood, displaying the image of the patron in the central niche, surrounded by figures of a Franciscan saint and Santa Luzia. This temple was recovered and adapted to museum and it was inaugurated on the 6th July 2001. It shows an alternated long-term exhibition about the sacred Art of the County, with parts of the museum and congregations collection within the program for the recovery of the integrated heritage. It also has two rooms with exhibitions of the Antoniana collection and archeological findings.



## House-Museum Mário Coelho

Near the Parish Church of Vila Franca de Xira, in the nr. 5 of the typical and old *Travessa do Alecrim*, was born on the 25th March 1936, Mário Coelho, who fought more than 3000 bulls along his 40 years career. He acted in 1427 bullfights and in more than 200 Charity Festivals. House-Museum Mário Coelho, which was inaugurated on the 26th September 2001, provides to the visitor a “Journey” through the 40 years career of that brave bullfighter. Photographs, trophies, costumes of “luces” (luminous) and many other pieces, which provide us the contact with an integral part of the bullfighting history.



## Municipal Museum – Host-Nucleus

On the 27th September 2003 reopened in Vila Franca de Xira, the Host-Nucleus of the Municipal Museum, in the eighteenth-century palace of the old *Rua da Ribeira*, erected by Judge of the High Court Diogo Baracho. The construction was not finished, with only the south side and the front. It is original tripartite and centered on the church dedicated to Nossa Senhora do Monte do Carmo, which structure was recovered. Here were re-established the technical services of the museum and the public interface areas – Exhibitions, Documentation Center and Educational Workshop.

